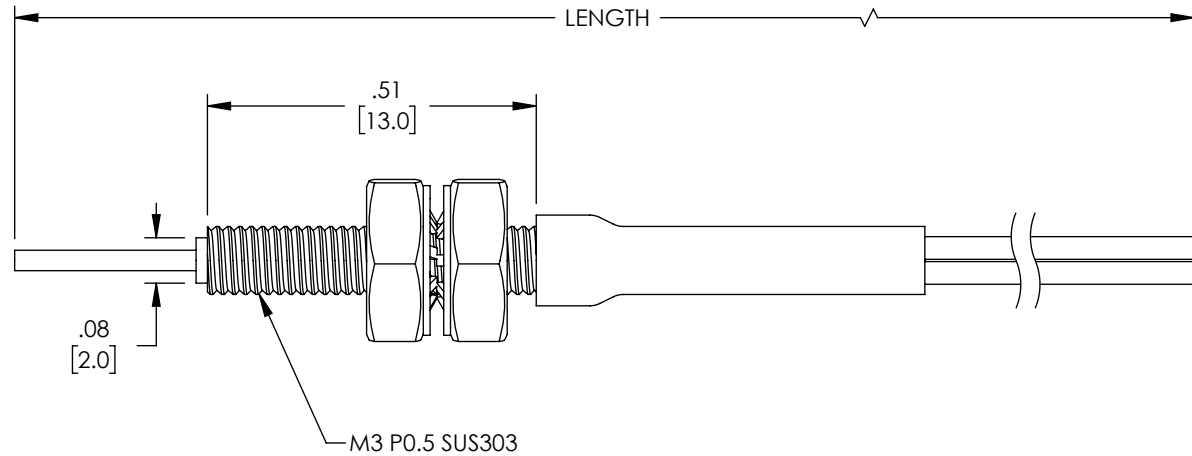
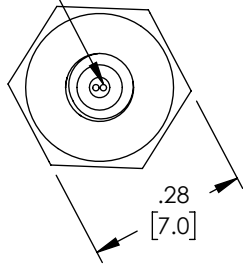


THE INFORMATION CONTAINED IN THIS DRAWING IS THE SOLE PROPERTY OF L-COM, INC. ANY REPRODUCTION IN PART OR WHOLE WITHOUT THE WRITTEN PERMISSION OF L-COM, INC. IS PROHIBITED.

REVISIONS			
REV	DESCRIPTION	DATE	APPROVED
A	INITIAL RELEASE	2/4/2022	THOUGHTON

FIBER OPTIC CORE  
2X Ø0.25

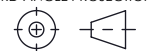


NOTES:

- COMPONENT SHALL BE INDIVIDUALLY PACKAGED IN ACCORDANCE WITH L-COM SPECIFICATION PS-0031.

**REGULATORY COMPLIANCE:**

EU RoHS DIRECTIVE (MOST RECENT RELEASED VERSION)

UNLESS OTHERWISE SPECIFIED, DIMENSIONS ARE IN INCHES [mm]		APPROVALS		DATE		<div>L-com<sup>™</sup> an INFINITE<sup>®</sup> brand</div>		50 High Street, West Mill, North Andover, MA 01845 USA. Phone: 1.800.341.5266 1.978.682.6936			
OVERALL CABLE LENGTH TOLERANCE: ≤12 [305] = +1 [25] / -0 >12 [305] ≤60 [1524] = +2 [51] / -0 >60 [1524] ≤120 [3048] = +4 [102] / -0 >120 [3048] ≤300 [7620] = +6 [152] / -0 >300 [7620] = +5% / -0		DRAWN BY DMAY		2/3/22		CATEGORY  FIBER OPTICS					
		CHECKED BY THOUGHTON		2/4/2022							
		APPROVED BY THOUGHTON		2/4/2022							
ALL OTHER DIMENSIONAL TOLERANCES: .X = ± .2 [5]      FRACTIONS .XX = ± .02 [.5]      ± 1/32 .XXX = ± .005 [.13]      ANGLES ± 1°		CONFIGURATION DETAILS OF UNDIMENSIONED FEATURES MAY VARY				PRODUCT DESCRIPTION FIBER OPTIC SENSOR CABLE, DIFFUSE REFLECTION, M3, STRAIGHT, R10					
THIRD-ANGLE PROJECTION 		COLOR VARIATIONS MAY OCCUR				SIZE A	CAGE CODE 43321	ITEM NO. FOACAMPDE32	REV. A		
						SCALE: NONE		CAD FILE: FOACAMPDE32.SLDDRW		SHEET 1 OF 1	